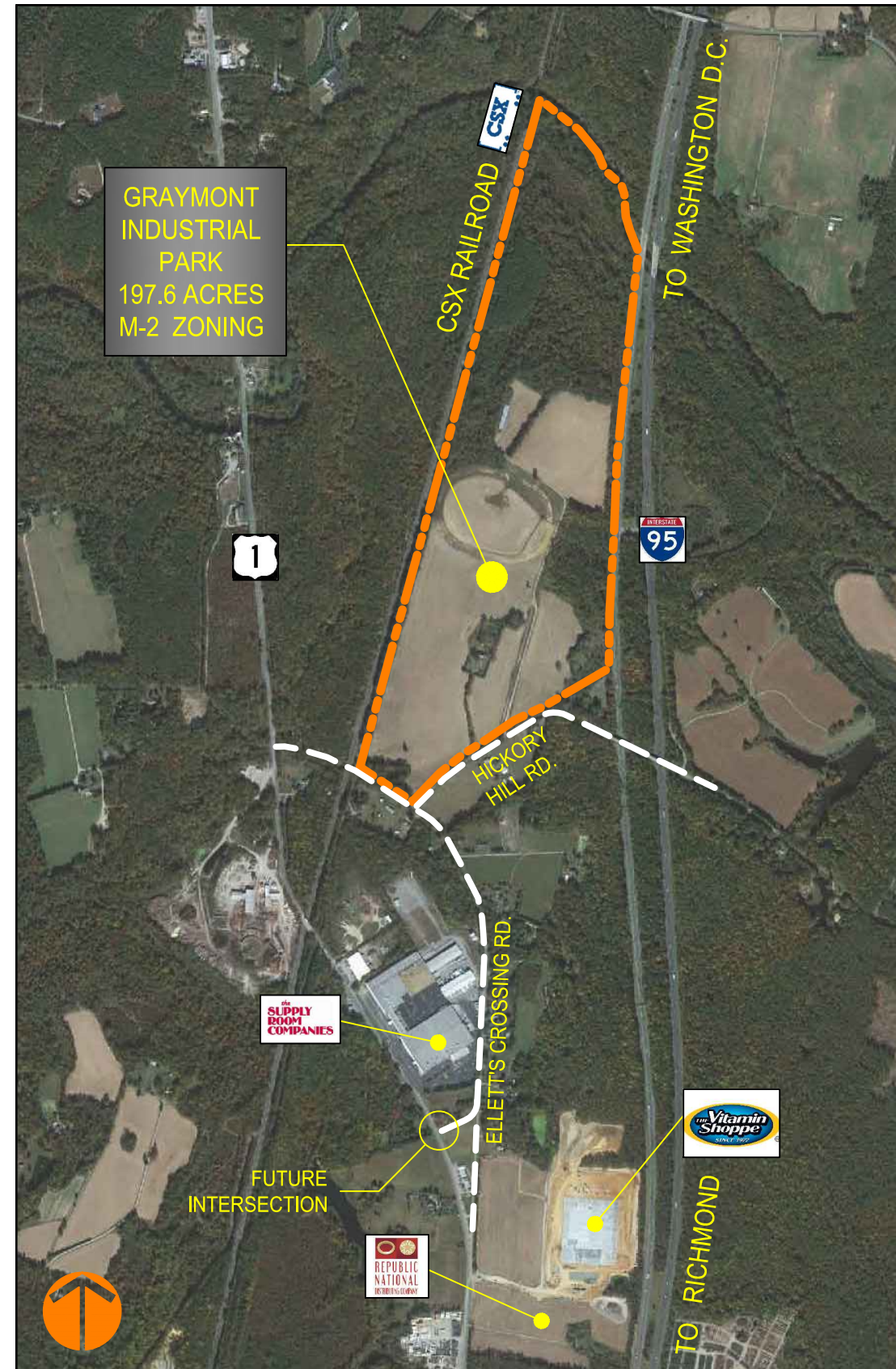
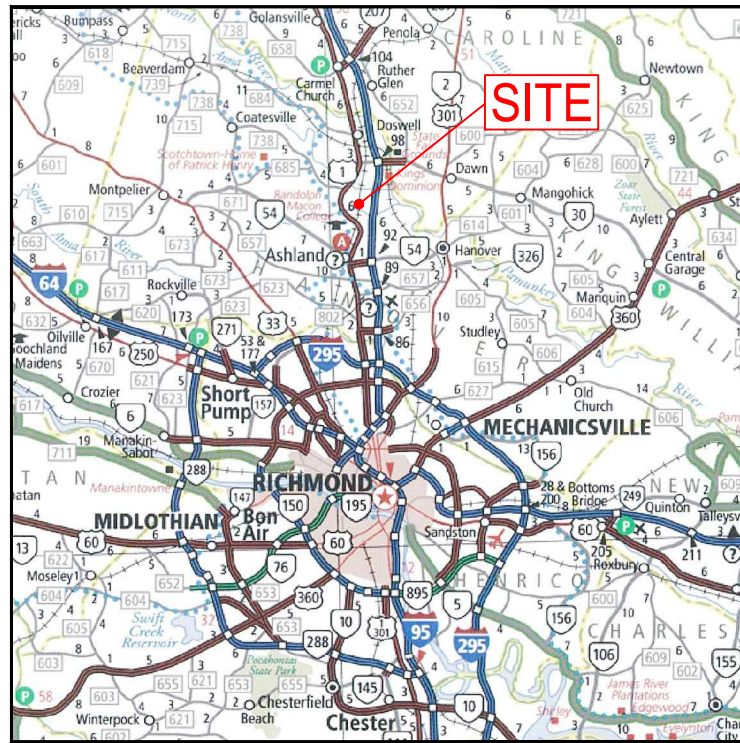


GRAYMONT INDUSTRIAL PARK

HANOVER COUNTY, VIRGINIA



SITE DATA

UTILITIES

- WATER - EXISTING 16" WATERMAIN ALONG ELLETT'S CROSSING ROAD RIGHT-OF-WAY
- SEWER - PUBLIC SEWER CONCEPTUALLY APPROVED BY COUNTY
- ELECTRIC - 34.5 KVA AVAILABLE
- TELEPHONE \ DATA - TELEPHONE AND FIBER OPTIC SERVICES ARE AVAILABLE IN THE VICINITY OF HICKORY HILL ROAD
- NATURAL GAS - EXISTING 6" SERVICE, MEDIUM PRESSURE (60 PSI) ALONG U.S. ROUTE 1 AT SOUTH END OF SITE. EXISTING 24" TRANSMISSION LINE, HIGH PRESSURE (1250 PSI) EAST OF INTERSTATE 95.



Exclusive Agent:

Clifford B. Porter, CCIM, SIOR
(804) 521-1442 Direct
cliff@porterinc.com

P.O. Box 6482
Richmond, VA 23230
(804) 353-7994
(804) 355-7950 Fax

SITE DATA

TRANSPORTATION

- ROAD - ACCESS TO INTERSTATE 95 AND U.S. ROUTE 1 VIA ELLETT'S CROSSING ROAD AT SOUTH END OF SITE. FUTURE HICKORY HILL INTERCHANGE ADJACENT TO SITE. SITE FRONTAGE ON INTERSTATE 95 - 4,000 FEET.
- DISTANCE TO: WASHINGTON, DC - 90 MILES
NORFOLK, VA - 110 MILES
I-295 INTERSECTION - 10 MILES
- RAIL - POTENTIAL FOR INDUSTRIAL TURNOUT FROM CSX SYSTEM ON WEST SIDE OF SITE. SITE RAIL FRONTAGE - 6,400 FEET
- AIR - 20 MILES TO RICHMOND INTERNATIONAL AIRPORT.
5 MILES TO HANOVER AIRPORT
94 MILES TO DULLES INTERNATIONAL AIRPORT.
- PORT - 29 MILES TO PORT OF RICHMOND
109 MILES TO PORT OF NORFOLK
128 MILES TO PORT OF BALTIMORE



DATE: AUGUST 15, 2013
REV. DECEMBER 18, 2013
SHEET 1 OF 2