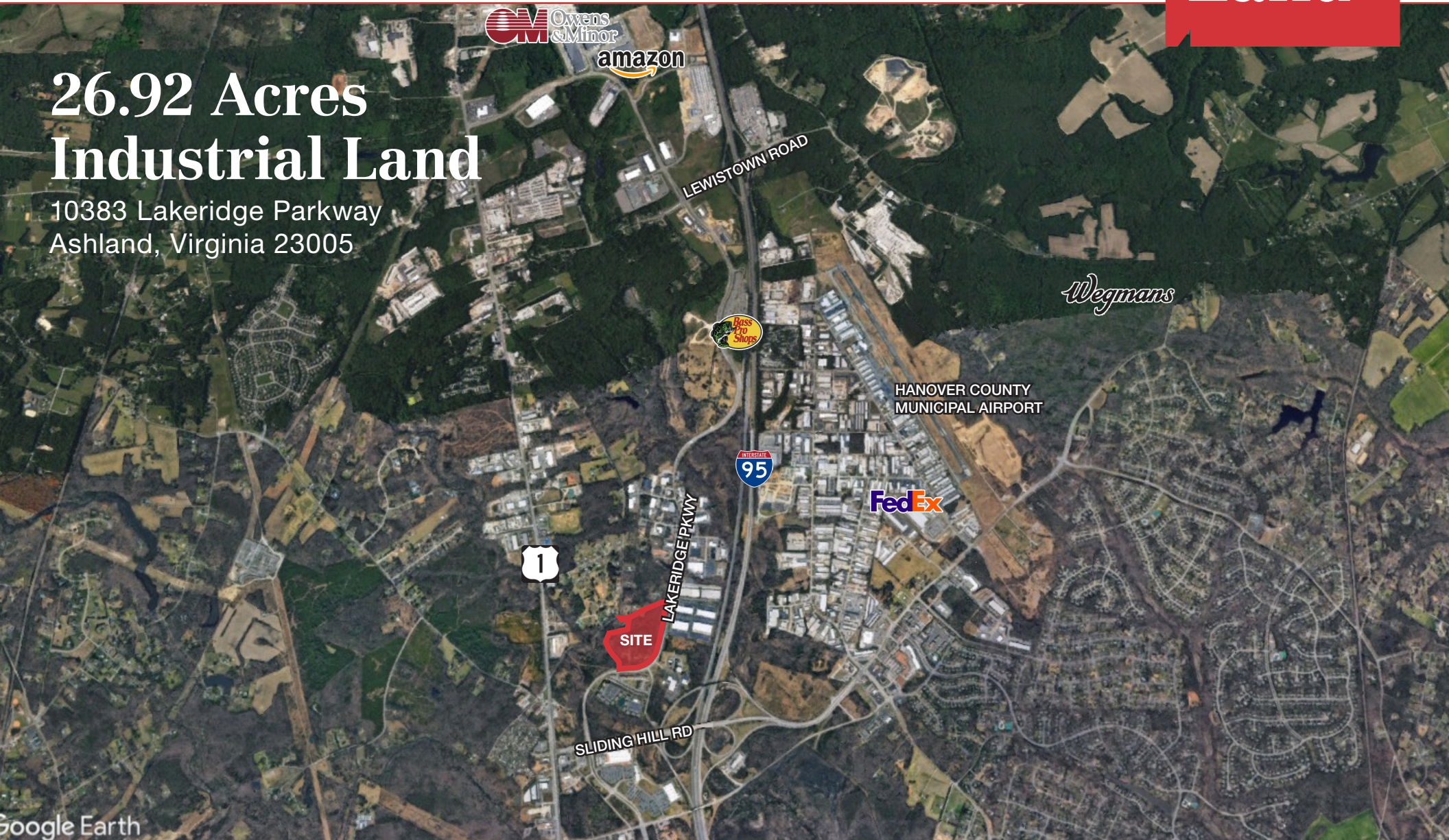


## 26.92 Acres Industrial Land

10383 Lakeridge Parkway  
Ashland, Virginia 23005



For more information:

**Chris Hopper**

+1 804 997 9232

[chrishopper@naidominion.com](mailto:chrishopper@naidominion.com)

**Cam Maxey**

+1 804 380 7254

[cammaxey@naidominion.com](mailto:cammaxey@naidominion.com)

3901 Westerre Parkway, Suite 240

Richmond, Virginia

+1 804 346 5000

[naidominion.com](http://naidominion.com)



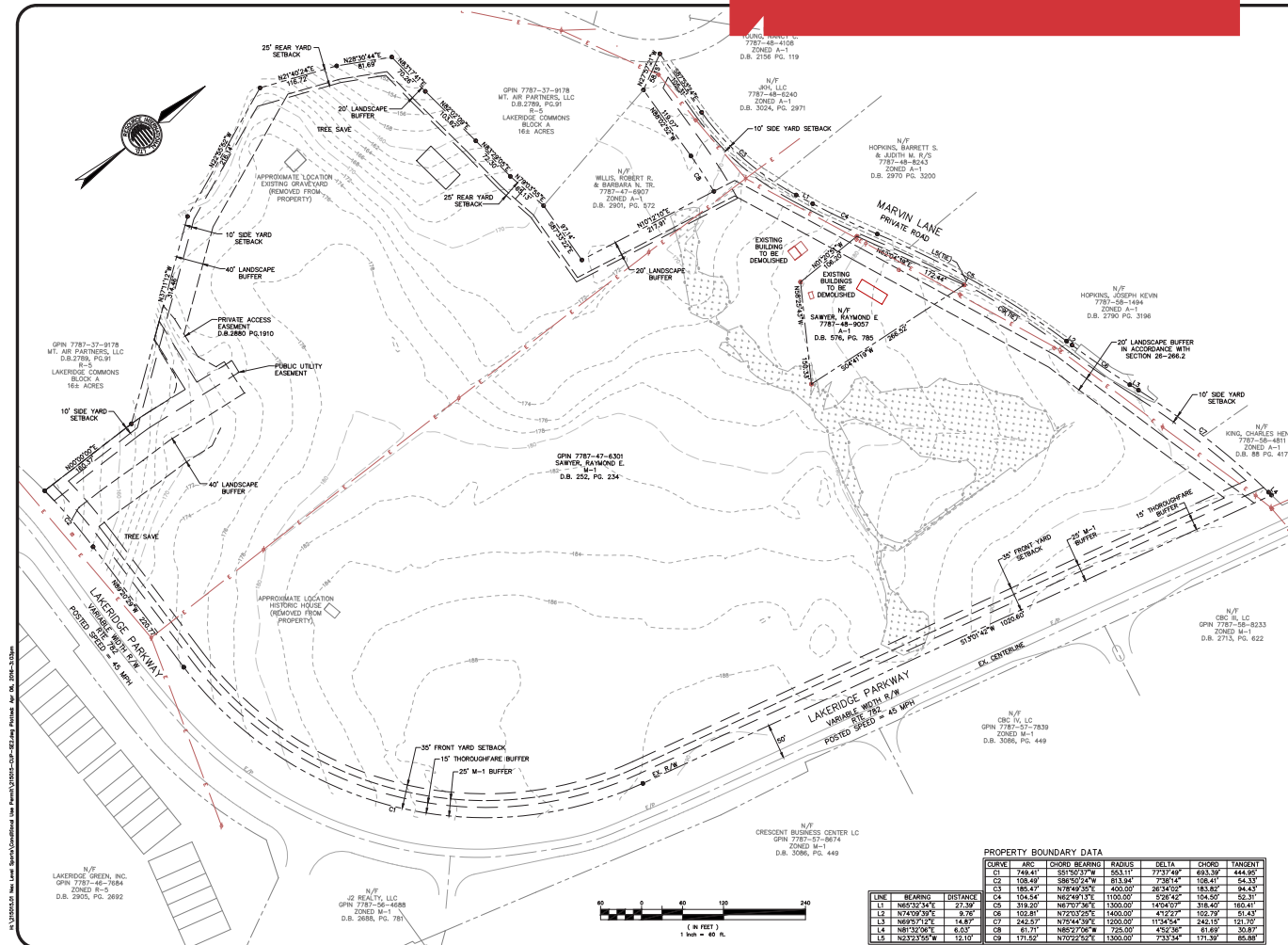
## 10383 Lakeridge Parkway

Ashland,  
Virginia 23005

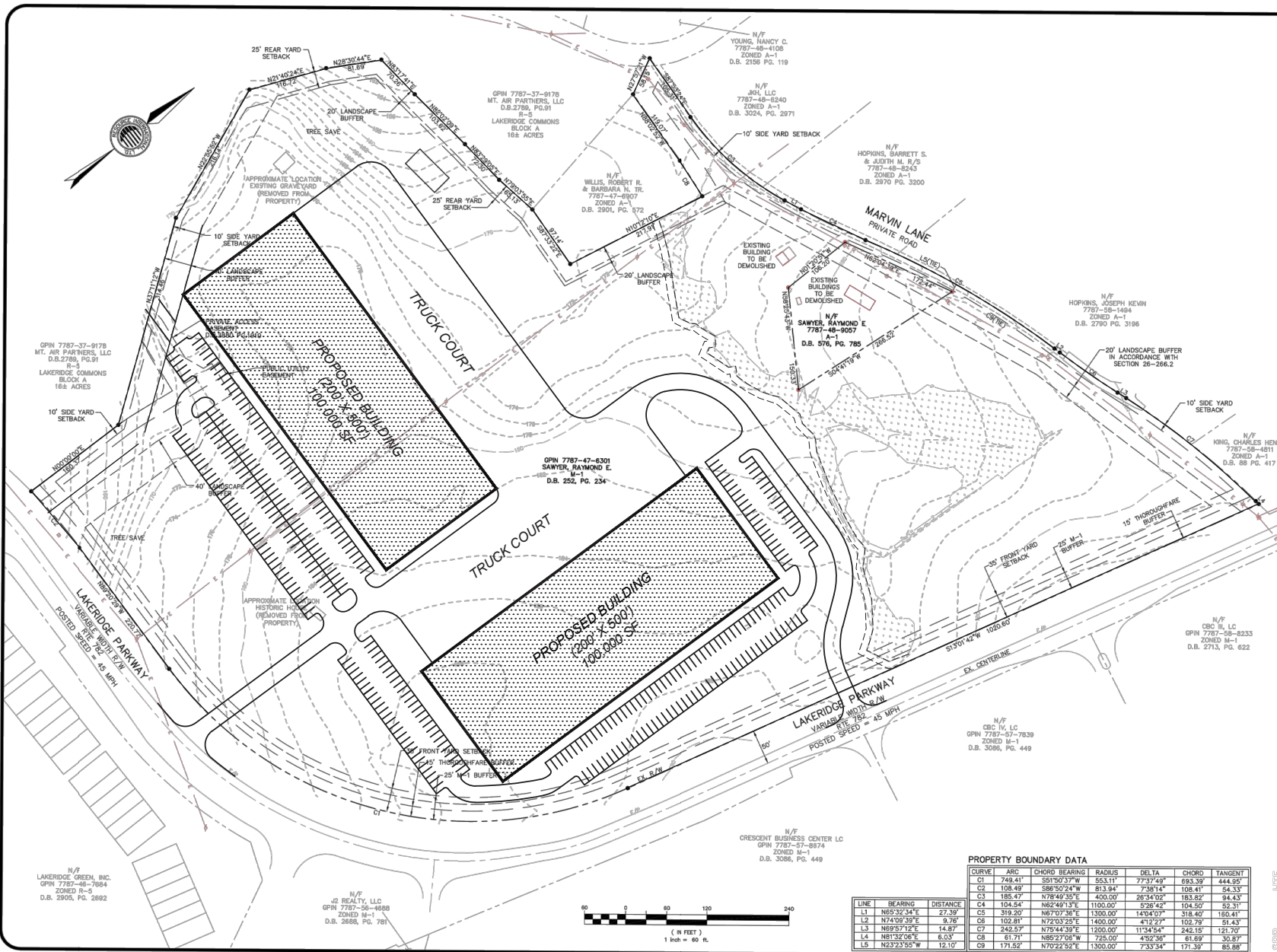
### Property Features

- 26.92 Acre industrial property on Lakeridge Parkway in Ashland, VA
- Zoned M-1
- Easy access to I-95 and Route 1 between Lewistown Road and Sliding Hill Road interchanges
- Proposed high bay industrial or flex office/warehouse use
- Ideally situated in the heart of the East Coast economic corridor, midway between Maine and Florida
- Over 45% of the U.S. Population is within a day's drive
- For Sale: \$125,000 per usable acre

For Sale  
**26.92 Acres**

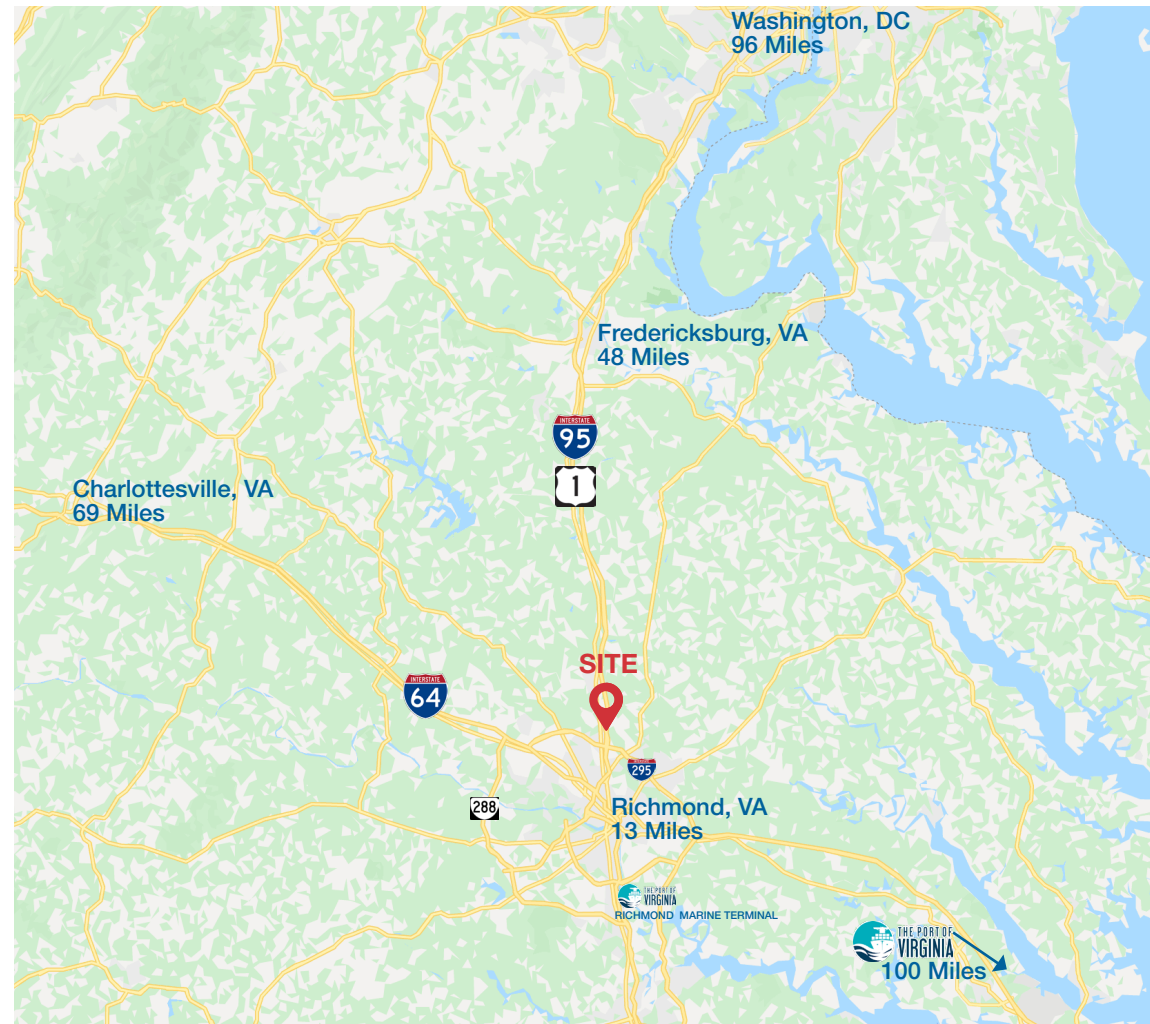
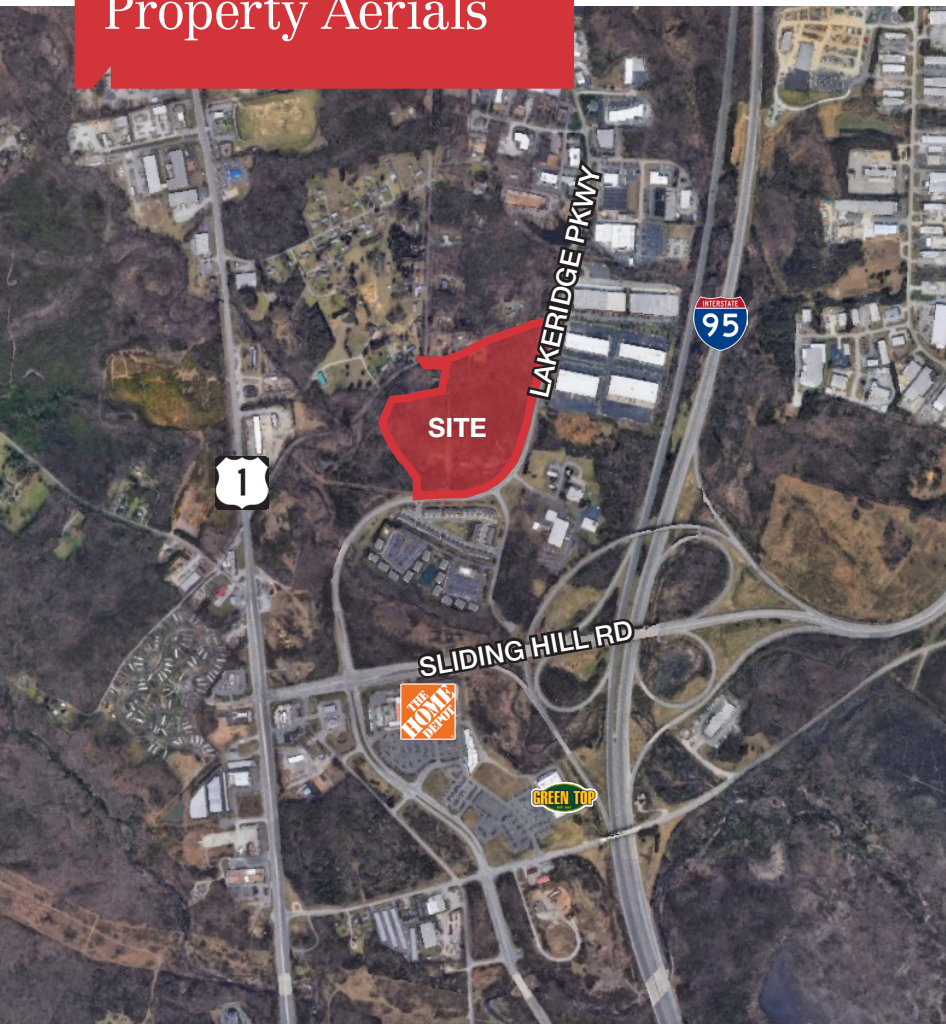


Boundary Survey









ABOVE LEFT The property is conveniently located off of I-95 and Route 1 between the Sliding Hill and Lewistown Road interchanges | ABOVE RIGHT Excellent Mid-Atlantic location with access to nearby markets, I-95, I-64 and I-295, the Port of Virginia, and the Richmond Marine Terminal barge service.

For more information:

**Chris Hopper**

+1 804 997 9232

chrishopper@naidominion.com

**Cam Maxey**

+1 804 380 7254

cammmaxey@naidominion.com



NO WARRANTY OR REPRESENTATION, EXPRESS OR IMPLIED, IS MADE AS TO THE ACCURACY OF THE INFORMATION CONTAINED HEREIN, AND THE SAME IS SUBMITTED SUBJECT TO ERRORS, OMISSIONS, CHANGE OF PRICE, RENTAL OR OTHER CONDITIONS, PRIOR SALE, LEASE OR FINANCING, OR WITHDRAWAL WITHOUT NOTICE, AND OF ANY SPECIAL LISTING CONDITIONS IMPOSED BY OUR PRINCIPALS NO WARRANTIES OR REPRESENTATIONS ARE MADE AS TO THE CONDITION OF THE PROPERTY OR ANY HAZARDS CONTAINED THEREIN ARE ANY TO BE IMPLIED. REV 4-8-20

3901 Westerre Parkway, Suite 240  
Richmond, Virginia  
+1 804 346 5000  
[naidominion.com](http://naidominion.com)