

ATLEE STATION LOGISTICS CENTER

MECHANICSVILLE, VA

185,000 SF
speculative industrial building
available for occupancy
summer 2022

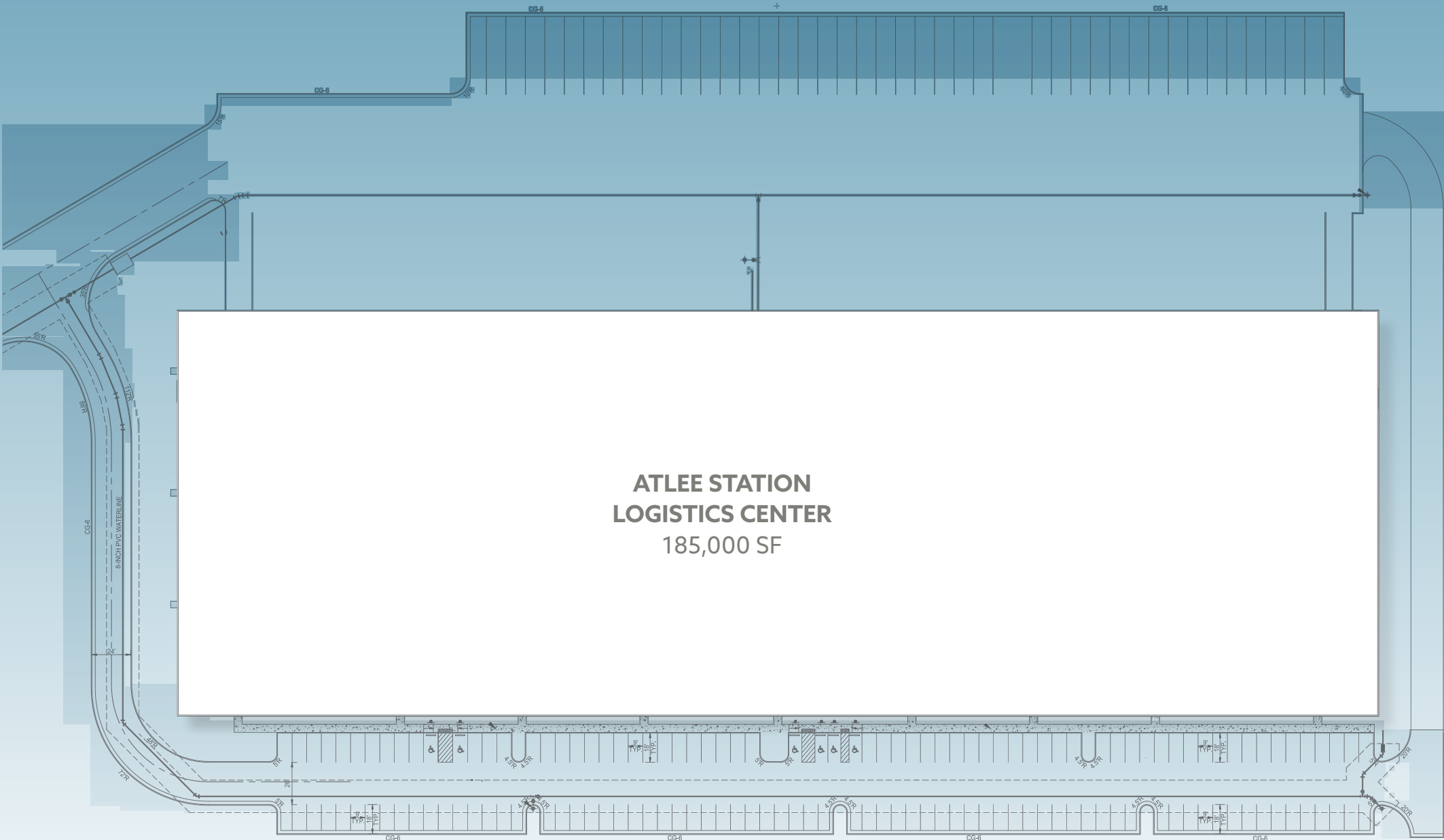


Adam T. Lawson
T +1 804 200 6384
M +1 804 514 7041
adam.lawson@am.jll.com

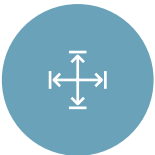
Muscoe Garnett
T +1 804 200 6340
M +1 678 296 4610
muscoe.garnett@am.jll.com



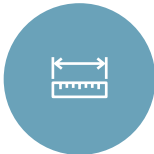
SITE PLAN



Construction type
tilt-up concrete, architectural wall panels, with aluminum framed punch windows



Site
23 acres



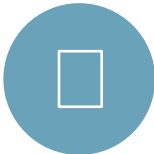
Typical column bay spacing
54' x 47.5'



Truck parking
46 dedicated truck / trailer parking spaces



Clear height
30'



Dock positions
40 docks



Drive-in doors
2 drive-ins with overhead doors



Car parking
150 spaces



IMMEDIATE ACCESS TO I-295

OWENS & MINOR HQ

FEDEX

RICHMOND TIMES DISPATCH

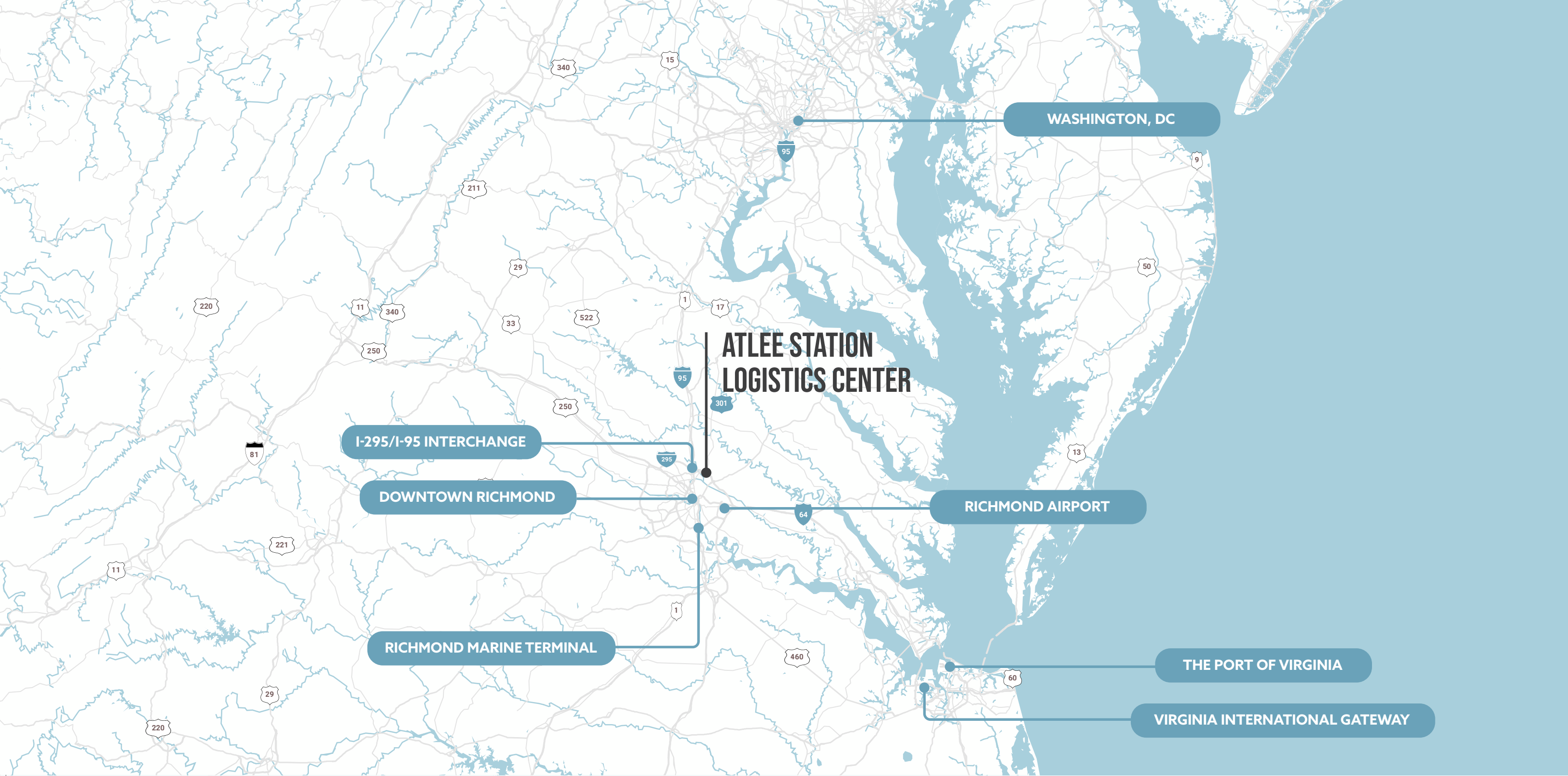
ATLEE STATION
LOGISTICS CENTER

CARTER CAT

SUPERVALU DISTRIBUTION CENTER

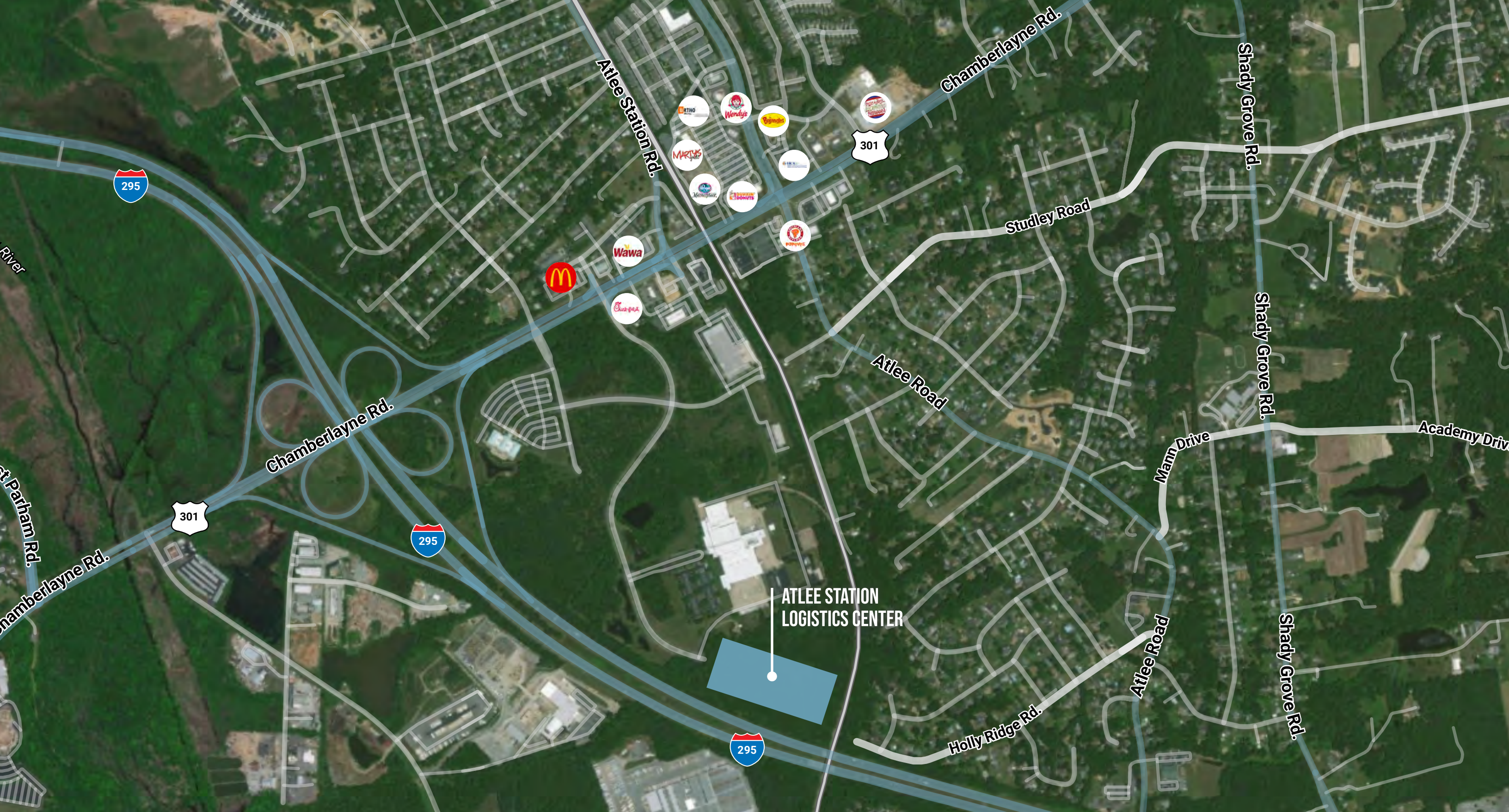
LOCATION

ATLEE STATION LOGISTICS CENTER



ACCESS

Route 301	0.7 miles	12min	Port of Richmond	17.7 miles	20 mins
I-295/I-95 Interchange	1.6 mile	4 mins	Port of Virginia	82.7 miles	1 hr 18 mins
I-64	9.1 miles	13 min	Virginia International Gateway	95.2 miles	1 hr 30 min
Downtown Richmond	11.5 miles	17 min	Washington, DC	101 miles	1 hr 56 min
Richmond Airport	16.4 miles	23 min			



AMENITIES

CONTACT US



Adam T. Lawson
T +1 804 200 6384
M +1 804 514 7041
adam.lawson@am.jll.com

Muscoe Garnett
T +1 804 200 6340
M +1 678 296 4610
muscoe.garnett@am.jll.com



Although information has been obtained from sources deemed reliable, neither Owner nor JLL makes any guarantees, warranties or representations, express or implied, as to the completeness or accuracy as to the information contained herein. Any projections, opinions, assumptions or estimates used are for example only. There may be differences between projected and actual results, and those differences may be material. The Property may be withdrawn without notice. Neither Owner nor JLL accepts any liability for any loss or damage suffered by any party resulting from reliance on this information. If the recipient of this information has signed a confidentiality agreement regarding this matter, this information is subject to the terms of that agreement. ©2021, Jones Lang LaSalle IP, Inc. All rights reserved.