

FOR SALE

I-95 Frontage adjacent to Northlake Park, Ashland, VA (Hanover County)

- 47.56 +/- Acres Available
- 50 +/- Acres Available
- Zoned M-2
- For Sale: CALL FOR INFORMATION

Contact Exclusive Agents:

Clifford B. Porter, CCIM, SIOR

Kevin E. Cox, Vice President

Wilson M Flohr

P.O. Box 6482

Richmond, VA 23230

(804) 353-7994 Direct

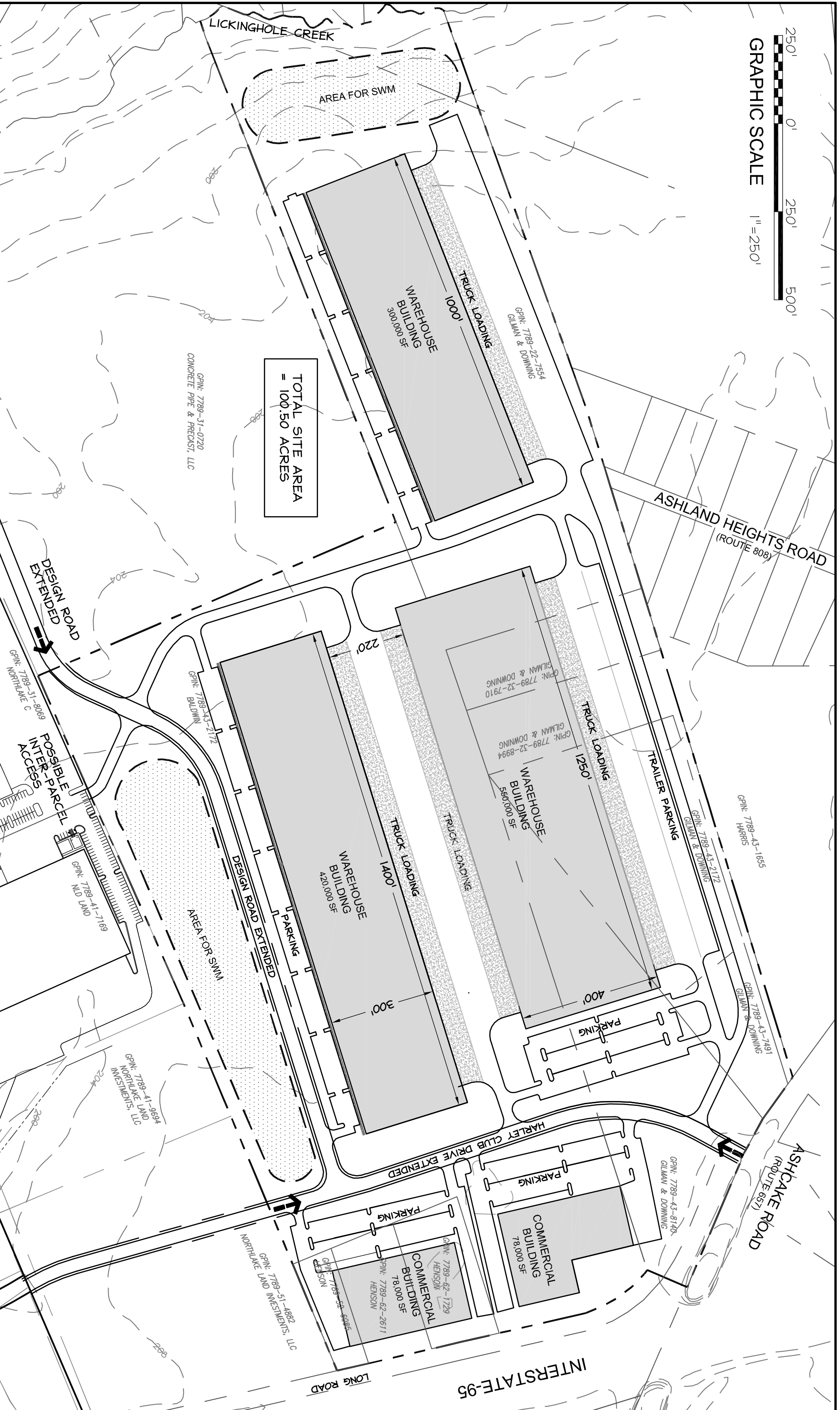
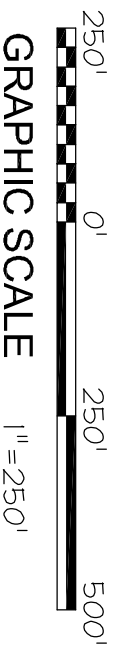
(804) 355-7950 Fax

www.porterinc.com

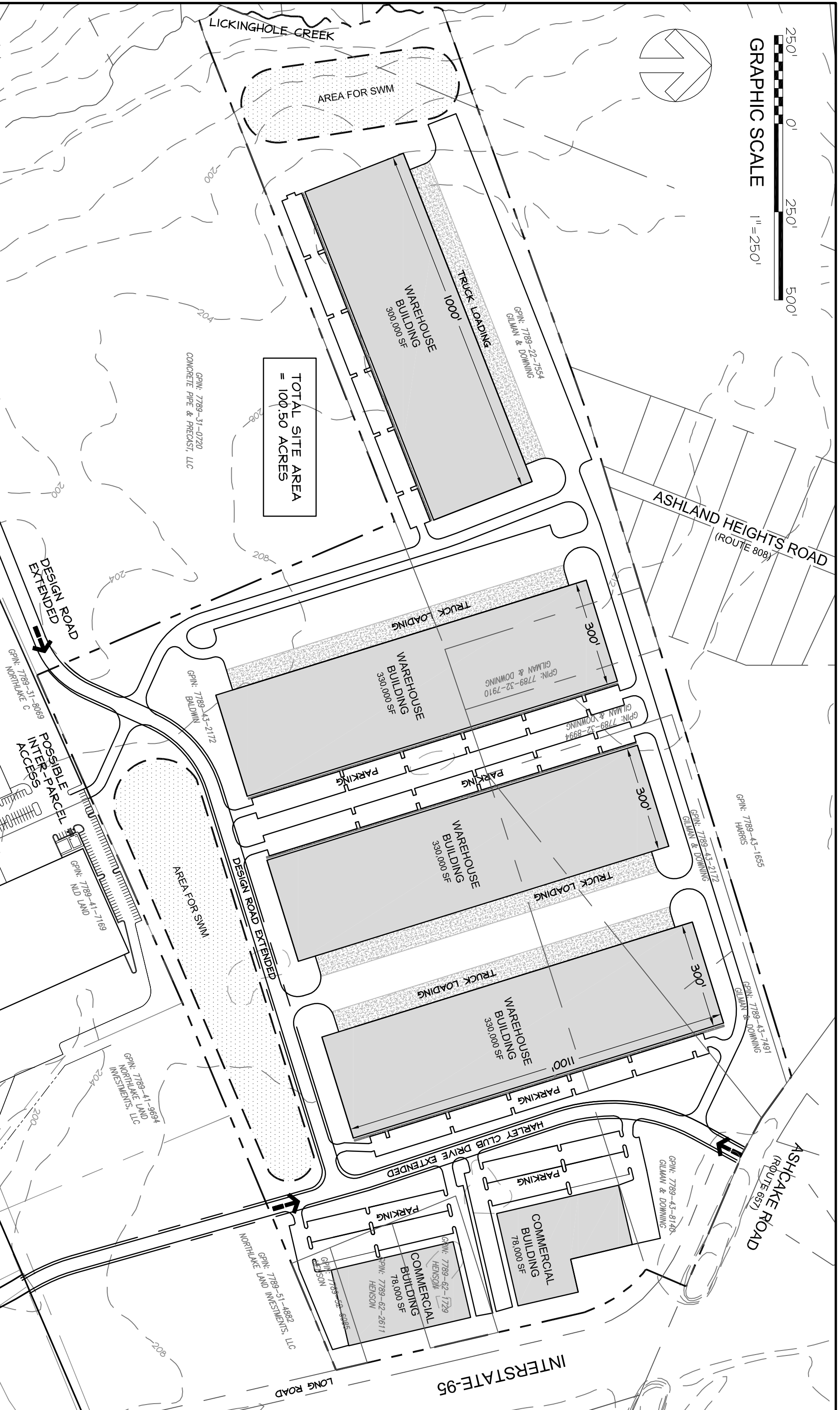
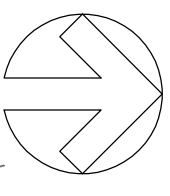
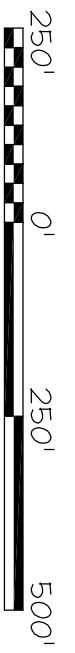


Working Hard, Working Smart...For Our Customers





TOTAL SITE AREA
= 100.50 ACRES



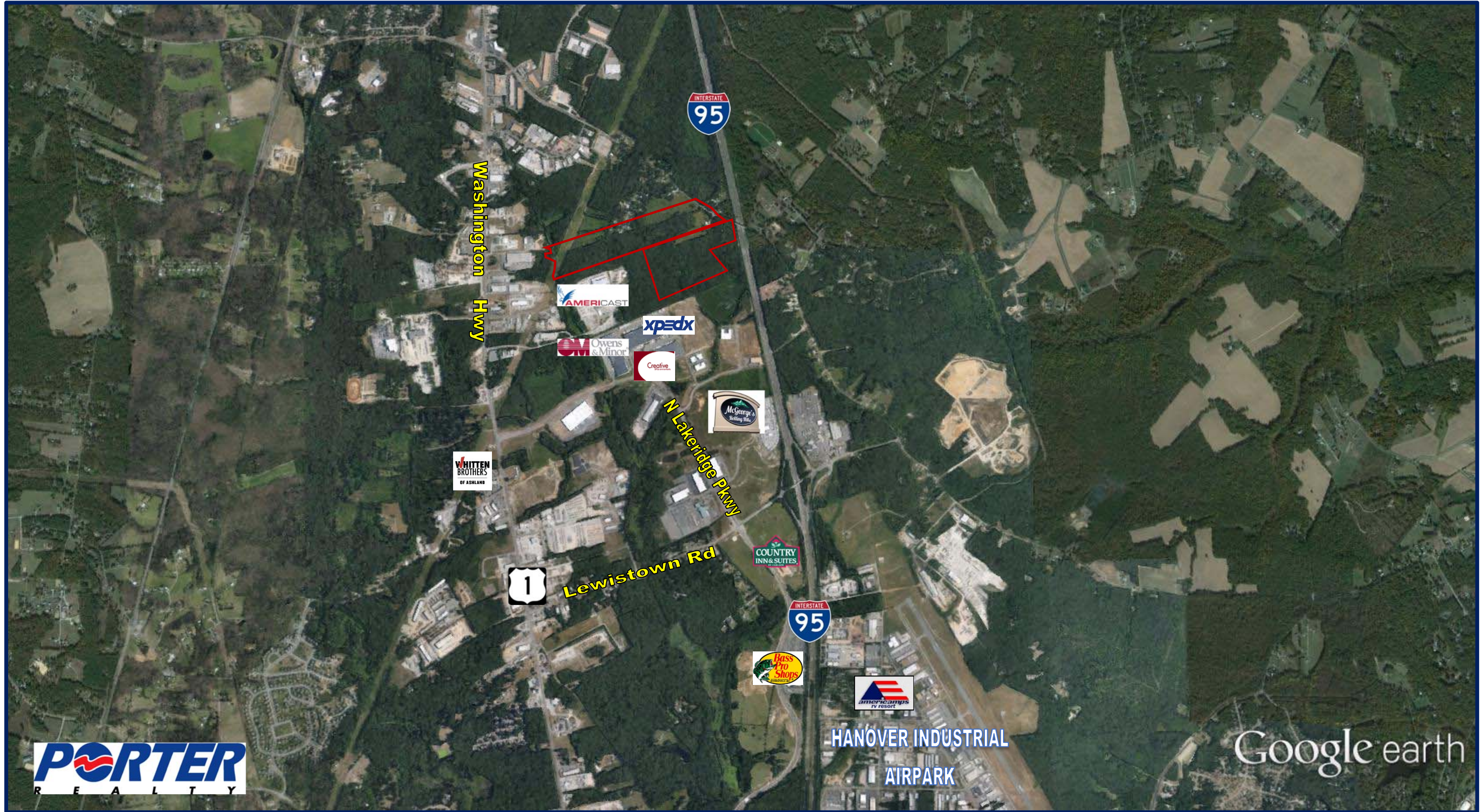
McKINNEY
COMPANY



Date: 09-30-2014

Baldwin, Downing, Gilman and Henson Properties

Sketch #1



Washington Hwy



N Lakeridge Pkwy



Lewistown Rd



HANOVER INDUSTRIAL AIRPARK



Google earth