



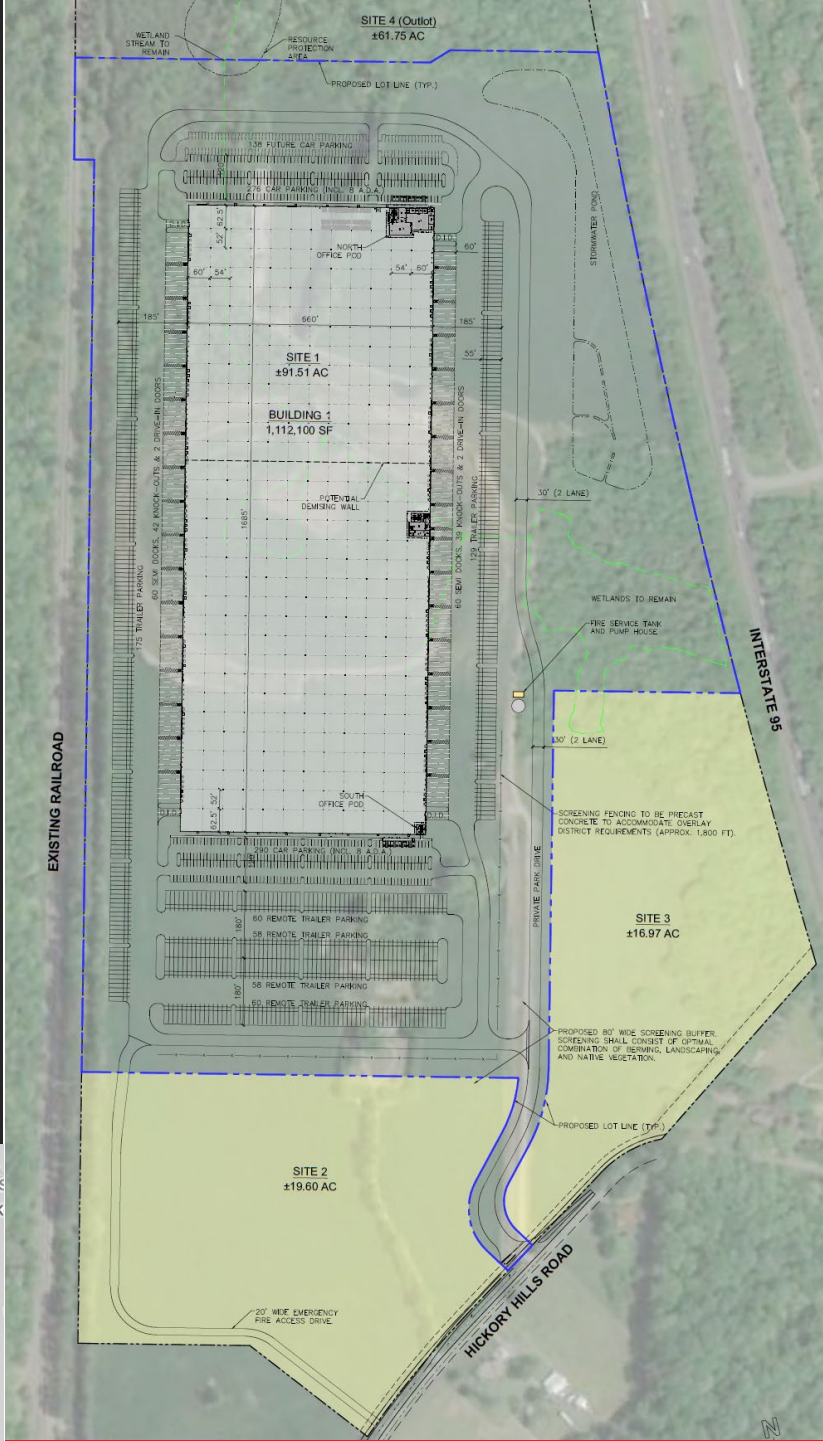
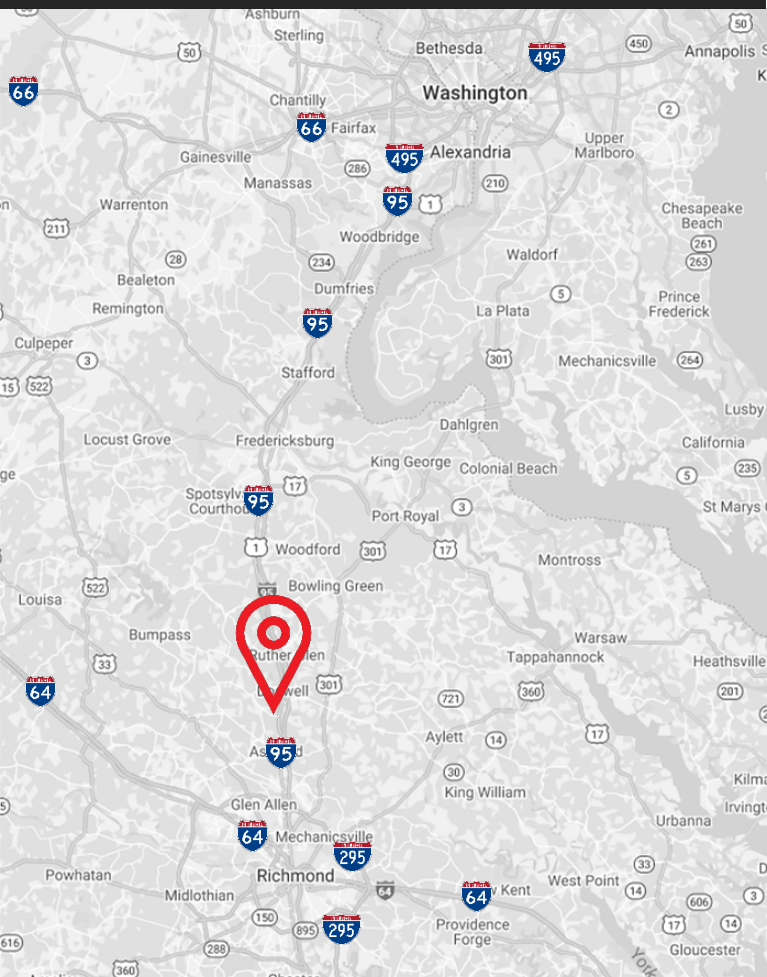
New Spec Warehouse Coming Soon to the I-95 Corridor

Hickory Hill Road
Ashland, VA 23005

SIZE 1,112,100 SF

DELIVERY Summer 2022

ZONING M-2



Site Plan

Jake Servinsky

+1 804 200 6428

jake.Servinsky@am.jll.com

Adam Lawson

+1 804 200 6384

adam.lawson@am.jll.com



Although information has been obtained from sources deemed reliable, JLL does not make any guarantees, warranties or representations, express or implied, as to the completeness or accuracy as to the information contained herein. Any projections, opinions, assumptions or estimates used are for example only. There may be differences between projected and actual results, and those differences may be material. JLL does not accept any liability for any loss or damage suffered by any party resulting from reliance on this information. If the recipient of this information has signed a confidentiality agreement with JLL regarding this matter, this information is subject to the terms of that agreement. ©2020. Jones Lang LaSalle IP, Inc. All rights reserved.