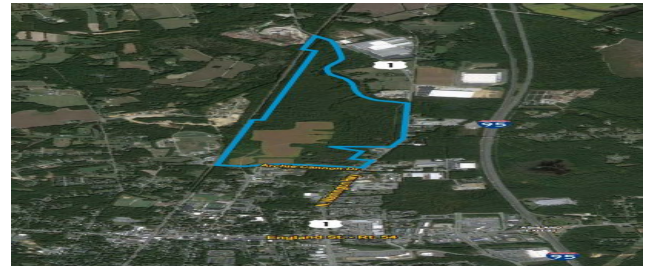


Holland Axelle

Washington Highway
Ashland, VA 23006



This property is Business Ready Site Program Certified

Availability			
Total Site Area:	277 ac / 110.8 ha	Available Land:	275
Largest Contiguous:	275 ac / 110 ha	Subdividable:	Yes
Built-To-Suit:	No	Range of Site Sizes:	acres
Specifications			
Topography:	Level to rolling to slopes	Zoning:	M1
Industrial Park:	No	Outside Storage Allowed:	No
Pad Ready:	No		
Utilities			
Electric Provider:	Dominion Energy		
Natural Gas Provider:	Virginia Natural Gas		
Water Provider:	Hanover County		
Sewer Provider:	Hanover County		
Fiber/Broadband Provider:	Verizon		
Other Fiber/Broadband Provider:			
Transportation			
Interstate/Distance:	Interstate 95 /2.6 miles		
4-Lane Highway/Distance:	U.S. Highway 1 /0.1 miles		
International Airport:	Washington-Dulles International Airport /102.8 miles /94 minutes		
Commercial Airport:	Richmond International Airport /25.9 miles /28 minutes		
General Aviation Airport:	Hanover County Municipal Airport /7.0 miles /9 minutes		
Port of Virginia:	93.2 miles /84 min		
Port of Virginia (Inland Port):	26.5 miles / 29 min		
Rail Served :	No		



Holland Axselle

Washington Highway
Ashland, VA 23006

Contact

Brandon Turner
Hanover County
(804) 365-6459
bsturner@hanovervirginia.com

Comments

The Site has been characterized as a Business Ready Site (Tier 4). All utilities are on site and able to meet industrial requirements. A 34.5 kV distribution line exists on site. The nearest transmission line - a 115 kV and 230 kV line - is located approximately one mile east across I-95.